



Operator's Manual

(Excerpt)

COL**OR**TRONIX LLC

ADELPHI Key-Link System

Table of Contents

Introduction.....	1
Before You Begin	1
Purpose of this Manual	1
Product Overview	1
Press Consoles	1
Getting Started	2
How It Works.....	2
Key-Link System Flowchart.....	2
Viewing Files & Press Operations, Sheetfed Press	3
Main Screen, Sheetfed Press.....	3
Parts of the Main Screen, Sheetfed Press.....	3
Viewing Files & Press Operations, Web Press.....	Error! Bookmark not defined.
Main Screen, Web Press	Error! Bookmark not defined.
Setting up the Press and File Format	Error! Bookmark not defined.
Options Screen, Sheetfed and Web Presses.....	Error! Bookmark not defined.
Adjusting the Fountains	Error! Bookmark not defined.
Fountain Adjust Screen, Sheetfed and Web Presses.....	Error! Bookmark not defined.
Adjusting the Curves.....	Error! Bookmark not defined.
Curve Adjust Screen, Sheetfed and Web Presses	Error! Bookmark not defined.
Displaying a File.....	Error! Bookmark not defined.
Main Screen, Sheetfed and Web Presses	Error! Bookmark not defined.
Sending and Saving a File.....	Error! Bookmark not defined.
Main Screen, Sheetfed and Web Presses	Error! Bookmark not defined.
Harris Press	Error! Bookmark not defined.
Main Screen, Web Press, For Harris Presses Only.....	Error! Bookmark not defined.
Parts of the Main Screen, Web Press.....	Error! Bookmark not defined.

Where to Get Help

Tech support: Call (845) 857-9294 – Monday through Friday – 8 am to 10 pm EST.

Headquarters: Phone (207) 990-8932. Fax (207) 990-8931

Email: info@colortronix.com

Mailing Address: COLORTRONIX LLC, 347 Kelly Road, Hermon, Maine 04401

Introduction

Before You Begin

Please take a few minutes to read through this manual to get a better understanding of the Adelphi Key-Link system. Complete installation and demonstration of the system will be performed by a Colortronix engineer.

Purpose of this Manual

The purpose of this manual is to provide step-by-step instructions to help you:

- View files and press operations
- Set up the press and file format
- Adjust the fountains
- Adjust the curves
- Display a file
- Send and save a file to the press

User interface screens are provided to illustrate how to perform these basic tasks.

Product Overview

Networking: The Adelphi Key-Link system makes it possible to network most offset printing presses (old, new, web, or sheetfed) directly to any Computer-To-Plate system (CTP). By implementing networking capabilities, Adelphi's specially designed Key-Link software is able to present your fountains with the actual ink key data from the plates generated by your CTP system.

Color Rotation: Whether you use a standard color rotation or change the color order for every job, you enjoy the freedom to alter the settings easily — anytime — to provide the exact rotation order the press run requires. Each press stores its own default color order, which can be changed easily, while still keeping its default color order in system memory.

Database: The Adelphi Key-Link system automatically creates and maintains a database of all job files, replacing them with **Color OK** data whenever necessary. This database can be viewed and individual jobs selected at any time.

Press Consoles

Custom designed Adelphi network modules work with most major manufacturers' presses. Some of the consoles we have networked include:

- Mitsubishi
- KBA
- Komori
- Harris
- Akiyama
- Planeta
- Shinohara
- Heidelberg
- Zircon
- Perretta Graphics
- GMI-Micro color
- EPG
- Eltromat
- Inkflow

Our Key-Link software package does electronic “fingerprinting” of each press for high-quality, high-resolution, consistent presets every time a job is run.

Getting Started

How It Works The Adelphi Key-Link System consists of the following components, as highlighted in **Figure 1** below.

- Computer with Key-Link software
- Adelphi Network Module

The **Adelphi Network Module** is a custom designed “black box” that enables most presses to be networked directly to the **Computer-to-Plate system (CTP)**. The black box contains an eStrip, eTape, eCard, or eFloppy conversion media. The type of conversion media depends on the type of press you operate. The Key-Link software converts CIP or PPF files into press-format files and automatically presets the ink fountains with the plates' ink coverage data. This saves substantially on paper, ink, and press time.

Key-Link System Flowchart

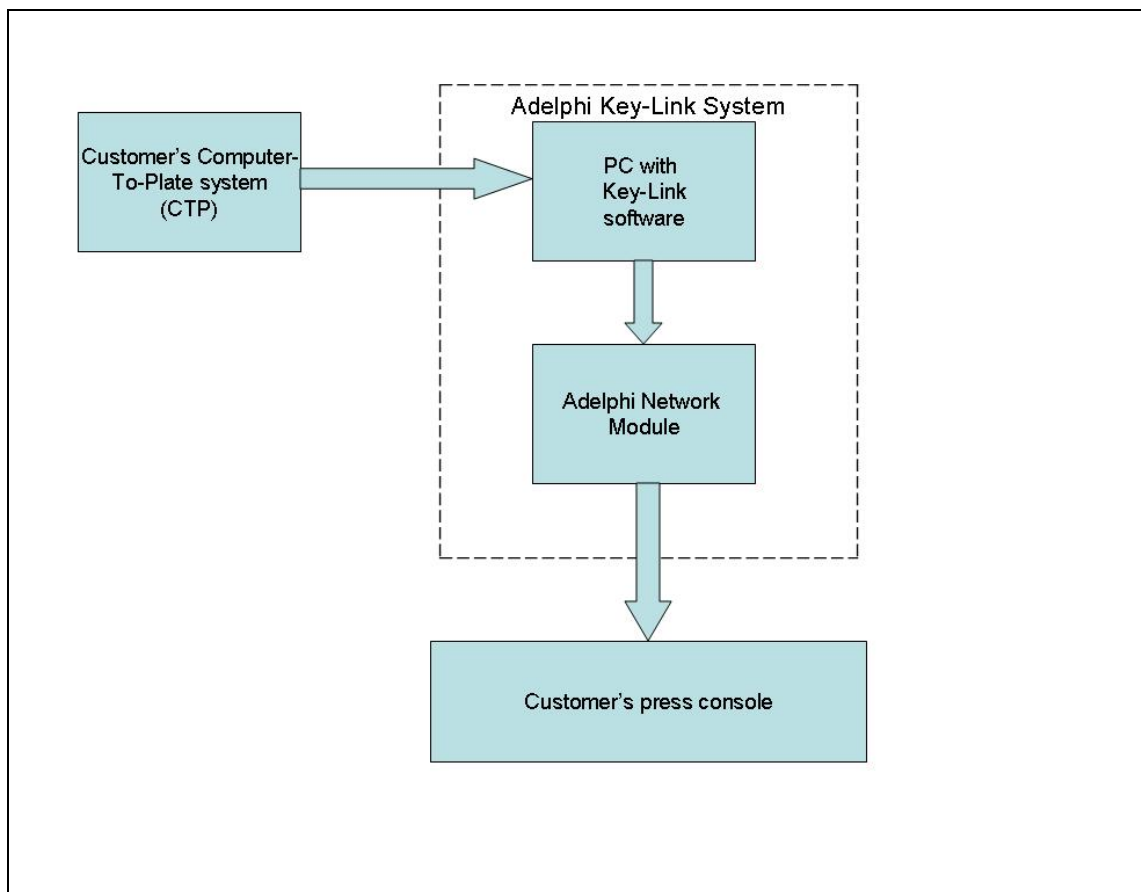


Figure 1: Components of the Adelphi Key-Link System

Viewing Files & Press Operations, Sheetfed Press

Main Screen, Sheetfed Press

The main screen (**Fig. 2**) provides information about file paths and press monitoring. At this screen you can also set up press and file formats, adjust fountains, adjust curves, display a file, send a file to the press, and save a file.

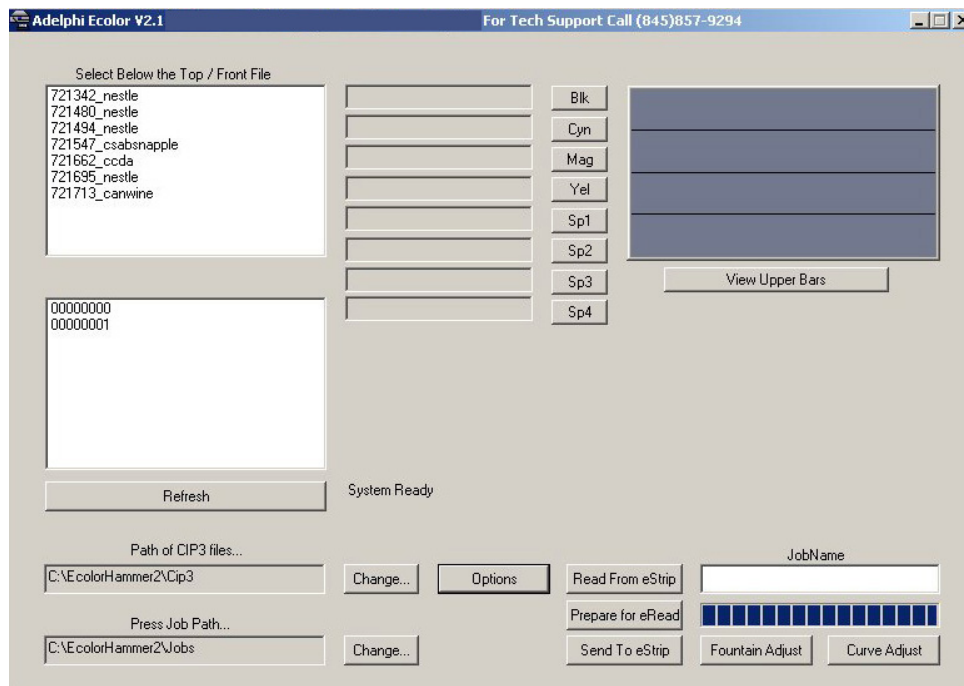
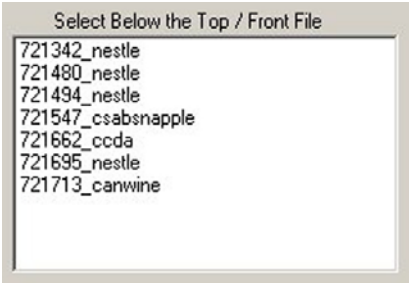


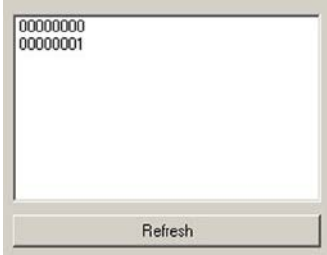
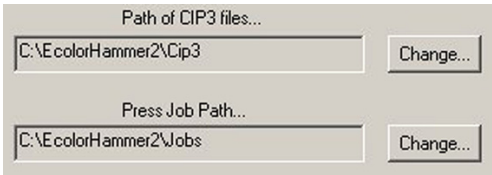
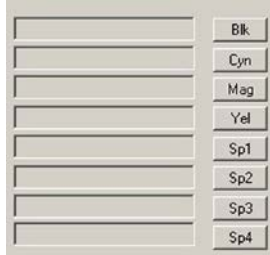
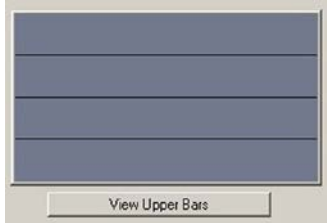
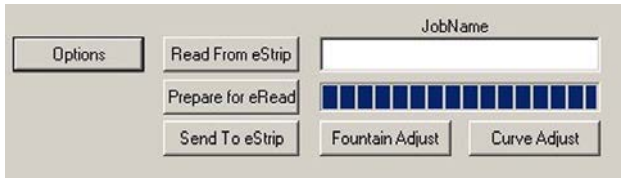
Figure 2: Main Screen, Sheetfed Press

Parts of the Main Screen, Sheetfed Press

EXAMPLE	TASK / DESCRIPTION
<p>Pre-Press Files</p> 	<p>Viewing CIP or PPF Files</p> <ul style="list-style-type: none"> Network path to pre-press files set by a Colortronix engineer or your company's IT personnel. <p>List of pre-press files — CIP or PPF</p> <ul style="list-style-type: none"> A scroll bar appears on the right side of the window if the list of files is larger than the screen.

Viewing Files & Press Operations, Sheetfed Press *(continued)*

Parts of the Main Screen, Sheetfed Press *(cont.)*

EXAMPLE	TASK / DESCRIPTION
<p>Repeated Files</p> 	<p>Viewing Saved Files</p> <ul style="list-style-type: none"> List of repeated jobs — the standard local hard drive jobs folder. Click Refresh to update the files in the listing. <i>Note:</i> The system does not automatically update the files when the program is running. A scroll bar appears on the right side of the window if the list of files is larger than the screen.
<p>File Paths</p> 	<p>Viewing File Paths</p> <ul style="list-style-type: none"> Displays the path to CIP or PPF files. Displays the path to Saved Jobs on your press. Click Change to change file path.
<p>Ink Color and Rotation</p> 	<p>Viewing the Ink Color and Rotation Window</p> <ul style="list-style-type: none"> Adjust the fountain data of the four process colors (Black, Cyan, Magenta, Yellow) and one special color. Refer to the “Fountain Adjust” section and the “Displaying a File” section for detailed information.
<p>Ink Distribution</p> 	<p>Viewing the Ink Distribution in the Press</p> <ul style="list-style-type: none"> Click View Upper Bars to alternate the color views. Refer to the “Displaying a File” section for detailed information.
<p>Press Operations</p> 	<p>Adjusting the Press</p> <ul style="list-style-type: none"> Click Options to set up press and file format. Click Fountain Adjust to set fountain levels. Click Curve Adjust to adjust curves. Refer to the “Setting Up Press and File Format” section and the “Adjusting the Fountains and Curves” section for detailed information. <p>Sending and Saving a File</p> <ul style="list-style-type: none"> Click Read From or Send To to send and save files to the press and saved file location. Refer to the “Saving a File” section for detailed information.